



STRADDLE TRUCK CARRIER M600A



STRADDLE TRUCK® CARRIER M600A

ENGINE: G. M. Detroit Diesel Model V6-53N. 6 cylinders. 318 cu. in. (5 212 cc) displacement with 3.88" (99 mm) bore, 4.50" (114 mm) stroke.

COOLING SYSTEM: Liquid 13 psi (0.9 kg/cm²) pressure system. 24-quart (22.7 liter) capacity.

FUEL TANK: Integral part of truck frame, 60-gallon (227.1 liter) capacity.

ALLISON MT643 FULL AUTOMATIC TRANSMISSION with TORQUE CONVERTER: Four speeds forward, one speed reverse. Constant mesh, heavy duty planetary type with 3.58 to 1 low gear. Single lever selects any forward or reverse gear. Full flow filter cleans transmission oil system.

DIFFERENTIAL: Heavy duty truck type, 6.1 to 1 gear ratio.

DRIVING HEADS: Eccentric mounting for drive chain adjustment. Drive head spindles mounted on grease packed, heavy duty sealed ball bearings.

CHAIN AND SPROCKET DRIVE: Connects driving head with rear drive wheels. 1.75" pitch A.S.A. roller chain with chain guard. 15 tooth drive sprocket, 47 tooth wheel sprocket, 3.1 to 1 ratio.

WHEEL FORKS: Fabricated steel, one-piece box construction for strength and rigidity. Full inside (½" thick) and outside (¾" thick) steel wheel guard wrappers with outside wrapper hinged to inner wrapper for ease of wheel service. Reinforcing shear bars top and bottom for added protection.

FORK TUBES: Heavy wall seamless steel alloy fork tubes, fully interchangeable between front and rear. Bearing surfaces are hard chrome plated for long service life.

SPRING SUSPENSION: Fully enclosed assembly for long, trouble-free life. Each wheel independently suspended on one heat treated, shot peened alloy steel spring. Springs located in a sealed compartment outside of fork tubes. Heavy duty tapered roller bearing absorbs thrust load from fork tube, replaceable sealed bushing takes radial load. Spring and top bearing may be serviced without removing fork tube from truck frame, reservoir type grease fittings provide lube to the top bushing and thrust bearing.

SHOCK ABSORBERS: Tubular, heavy duty truck type. Two per wheel for smooth ride and maximum control.

WHEELS: Fabricated steel hubs, mounted on heavy duty, grease packed tapered roller bearings, sealed against dust and moisture. Demountable heat treated alloy steel spindles. Demountable hub piloted rims-pilot carries full load. 12 locking clamps hold rim securely against pilot, insure correct rim alignment, easy wheel removal.

POWER BRAKES: Air boosted hydraulic, complete dual brake system provides an independent power supply from air tank to two hydraulic actuators, one for front wheels, one for rear. Air tank equipped with automatic moisture ejection. Radially located brake blocks give lining to drum contact through 360°, providing maximum brake area and long life. Automatic adjustment.

POWER STEERING: Hydrostatic four wheel, centerpoint system with hydraulic booster for quick, effortless response.

HYDRAULIC SYSTEM: One tandem, positive displacement vane type hydraulic pump powers load lift, steering and load swing. S.A.E. "O" ring fittings throughout. Wire braid reinforced hydraulic hoses. Double acting, self-centering control valves. Built-in adjustable differential relief valve. 60-gallon (227.1 liter) pressurized hydraulic oil tank with built-in oil level gauge integral part of truck frame.

HYDRAULIC OIL FILTERS: Two twin element 10 micron, full flow returnline hydraulic filters clean hydraulic oil and protect hydraulic system. One 141 micron filter mounted inside fill pipe to prevent dirt from entering tank. Hydraulic filters readily accessible for easy maintenance.

HOISTING MECHANISM: Four double acting hydraulic cylinders with "V" type packing for long sealing life. Hydraulic flow divider-combiner synchronizes cylinders through the operating cycle. Four over center valves lock the cylinders in position individually while in loaded position. Single lever valve control for hoist and shoe swing. Hoisting speed 23 ft/min (.12 m/sec) at 2,000 engine RPM.

SHOE SWING: Controlled by two double acting hydraulic cylinders anchored to the upper end of the shoe guides.

LIFTING SHOE AND SHOE GUIDES: Heavy structural angle 8" x 6" x 1" (205 mm x 150 mm x 25 mm) lifting shoes ride on 12 crowned heat treated steel rollers. Heavy structural channel shoe guide frames house the shoe guide rollers and protect the hoisting cylinder.

VERSATILE HYSTER'S STRADDLE TRUCK CARRIER OFFERS SIZE AND CAPACITY FOR YOUR SPECIFIC NEEDS: 60,000 lbs. (27 000 kg) Capa

POWER STEERING

Four-wheel hydraulic steering. Rugged fast maneuvering and effortless steering.

HUMAN EN

Operator c
unrestricted
proof glass
tions. Fully
defroster an
ease of ope

ENGINE/TRANSMISSION

Match power train components; GM Detroit Diesel Model V6-53N, 6 cylinder. Rear mounted with Allison transmission assure high performance, maximum productivity.

WHEEL FORKS

One-piece box construction, high strength and rigidity. Maximum durability to withstand shock.

WHEEL GUARD

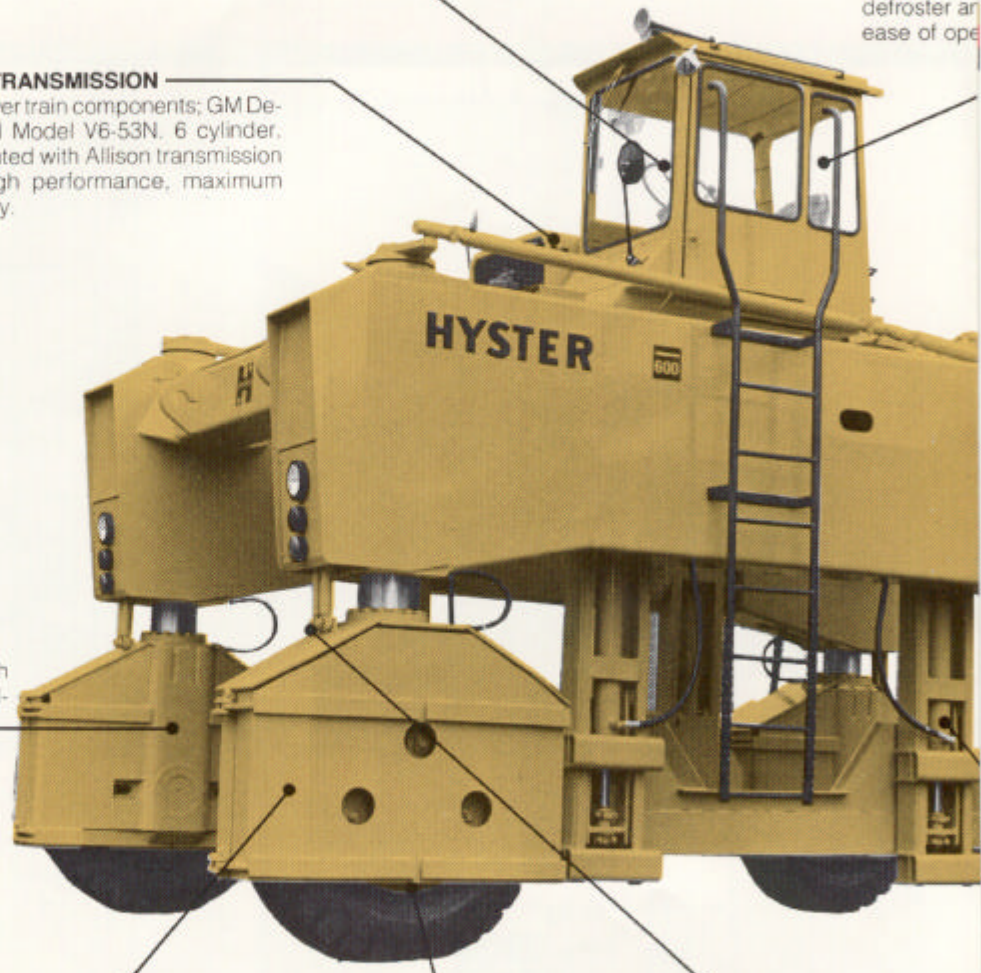
One-piece outer wheel guard with reinforcing bars for high impact strength. Pivot points at center of tire permit the guard to swing out for easy maintenance.

SUSPENSION

Each wheel is independently suspended on a steel spring offering excellent "ride" characteristics regardless of terrain condition.

POWER BRAKES

Air boosted hydraulic brake provide maximum brake area and long service life. High braking power with little pedal effort.



icity

ENGINEERING

Compartment designed for visibility. Slanted shatter-proof safety glass throughout. Reduce glare and reflected light. Enclosed cab with heater, and placement of controls for operation.

CHAIN GUARD

Guard protects drive components from damage. Guards swing up to side without removing for easy chain servicing and maintenance.

FRAME

Rugged unitized frame provides optimum rigidity, reduces weight and exceeds industrial standard for durability and carrying capacity.

HYDRAULIC SYSTEM

Operates steering, load lift and load swing. Large pressurized 60 gallons (227.1 liter) hydraulic oil tank. This design contributes to less heat build-up, more heat dissipation. Positive hydraulic power insures smooth, yet fast, lifting capacity. System designed for either hydraulic mineral oil or fire resistant water Glycol fluid.

FRAME: Rugged streamlined design. Formed and fabricated steel, arc-welded into single unitized frame. Side frame members are free of large openings in top and bottom flange. Box frame construction provides optimum rigidity, reduces weight, adds carrying capacity for heavy duty service. Frame mounted towing eye in corners.

CAB: Full enclosed all-weather steel cab. Mounted beside engine for maximum visibility. Thermal and acoustical insulation cover exposed cab wall and ceiling. Shatter-proof safety glass throughout. Sliding window on operator's right, for ample ventilation. Full sliding door latches open or shut. Bostrom T-Bar seat. Ladder with hand rails and skid proof rungs permit easy cab entry. Ladder extending below the main frame side are manufactured from roller chain for flexibility. Heater and defroster, parking brake warning light, spotlight, reverse warning horn, air horn and fire extinguisher, dome light, front and rear windshield wipers, and inside and outside rear view mirrors included as standard.

INSTRUMENTS: Volt meter, oil pressure gauge, water temperature gauge, fuel gauge, engine hour meter, two air pressure gauges, transmission temperature gauge, light switches, high-low beam indicator light, speedometer, key-type ignition and starter switch. Automotive type instrument panel is illuminated for night operation. Engine shut down.

ELECTRICAL SYSTEM AND LIGHTS: 62 amp alternator. Heavy duty 12 volt starting system and 150 minimum amp hour battery. Heavy duty relay system operates lights. Circuit breakers standard. Full reversing driving lights and stop tail lights. Lights reverse automatically with transmission directional change. Two amber parking lights, four amber turn signal lights, two shock mounted sealed beam headlights and back-up lights; all flush-mounted inside frame corners. Two load lights.

STANDARD EQUIPMENT

GM Detroit Diesel	Inside and Outside
Allison 4 Forward, 2 Reverse	Rear View Mirrors
Automatic Transmission	Spot Light
Dual Brake System	Parking Brake Warning Light
Power Steering	Air Horn
Full Inside and Outside	Full Reversing Speedometer
Wheel Guards	Shatter-Proof Safety Glass
Chain Guards	Tie Down (4 corner mounted)
All Weather Steel Cab with	Towing Eyes
Heater and Defroster	Universal Joint Guards
Automatic Full Reversing	Fire Extinguisher
Light System	Front and Rear Windshield
Reverse Warning Horn and Lights	Wipers
Directional Signals	Tires — 14.00 x 24 - 20 PR
Protectoseal Fuel Cap	Off-Highway
Bostrom Seat	

OPTIONS

Beacon Ray Light
Amber 360° Rotating
Amber Flashing
Custom Paint
Tires — 14.00 x 24 - 24 PR Extra Wall Carrier
14.00 x 24 - 24 PR Off Highway
Fire Resistant Hydraulic Oil

FIGURES IN **YELLOW** BACKGROUND ARE METRIC

DIMENSIONS* in. (mm)									
Package Height H	A	B	C	Package Width W	E	F	G	K	M
60	72	144	125	58	62	60	117.5	96	90
66	78	150	131	64	68	66	123.5	102	96
72	84	156	137	70	74	72	129.5	108	102
78	90	162	143	76	80	78	135.5	114	108
84	96	168	149	82	86	84	141.5	120	114
90	102	172	155	88	92	90	147.5	126	120
1 525	1 830	3 660	3 175	1 475	1 575	1 525	2 985	2 440	2 285
1 675	1 980	3 810	3 325	1 625	1 725	1 675	3 135	2 590	2 440
1 830	2 135	3 960	3 480	1 780	1 880	1 830	3 290	2 745	2 590
1 980	2 285	4 115	3 630	1 930	2 030	1 980	3 440	2 895	2 745
2 135	2 440	4 265	3 785	2 085	2 185	2 135	3 595	3 050	2 895
2 285	2 590	4 370	3 935	2 235	2 335	2 285	3 745	3 200	3 050

Width inside shoes is maximum bolster width for any given model. Shoe lip width 5" (127 mm).

NOTE: Any package height may be combined with any package width to obtain specifications for a specific model.

SPECIAL MODELS: Straddle Truck Carriers are available in package sizes other than the ones shown, subject to factory approval.

TRUCK WEIGHT: Basic model [60" x 58" (1 520 mm x 1 470 mm) package size] empty, approximately 36,000 lb. (16 400 kg). For each additional 6" (150 mm) load width add approximately 300 lb. (135 kg). For each additional 6" (150 mm) load height add approximately 600 lb. (270 kg).

STANDARD TIRES: 14.00 x 24, 20 PR off highway
OPTIONAL: 14.00 x 24, 24 PR extra wall carrier

MANEUVERABILITY* in. (mm)
(Based on standard truck with full wheel guards.)

Package Width	Full Width Load Longer Than Load Shoes (Limited Wheel Turn)				Full Width Load Not Exceeding Shoe Length, or Load 14" (355 mm) Narrower than Standard Package Width, or Unloaded			
	A	B	C	Max. Load Length for A, B, C	A	B	C	Max. Load Length for A, B, C
58		26'3"	16'	25'6"		22'	15'3"	24'8"
64		26'9"	16'6"	25'8"		22'6"	15'9"	24'9"
70	14'7"	27'2"	16'11"	25'10"	9'7"	22'11"	16'2"	24'10"
76		27'8"	17'5"	26'		23'5"	16'8"	24'11"
82		28'1"	17'10"	26'2"		23'10"	17'1"	25'
88		28'7"	18'4"	26'4"		24'4"	17'7"	25'1"
1 475		8 000	4 875	7 770		6 705	4 650	7 520
1 625		8 155	5 030	7 825		6 860	4 800	7 545
1 780	4 445	8 260	5 155	7 875	2 920	6 985	4 930	7 570
1 930		8 435	5 310	7 925		7 135	5 080	7 595
2 085		8 560	5 435	7 975		7 265	5 205	7 620
2 235		8 710	5 590	8 025		7 415	5 360	7 645

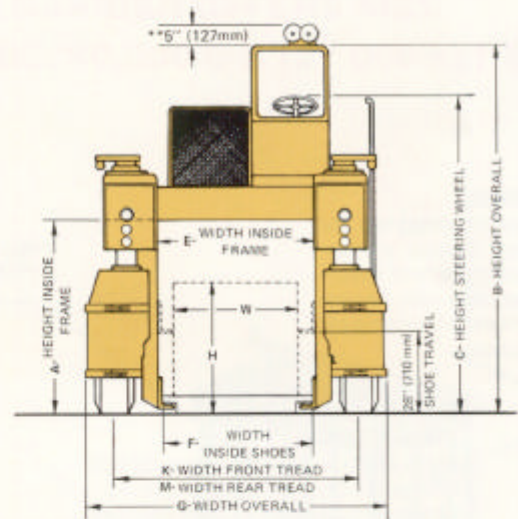
TRAVEL SPEEDS* mph (km/h)

Gear	mph (km/h)	
	mph	km/h
1st	4.5	7.2
2nd	8.0	13.8
3rd	12.0	19.3
4th	17.0	27.3
1st reverse	3.0	7.7

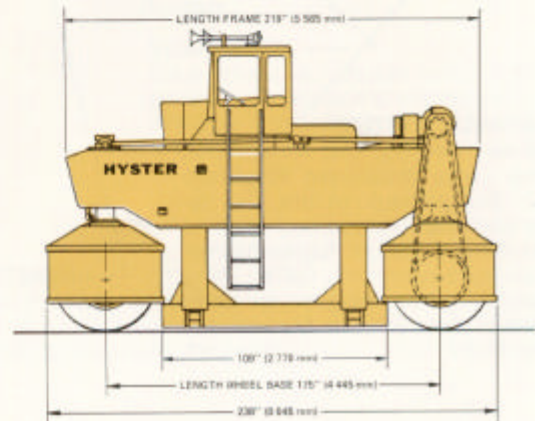
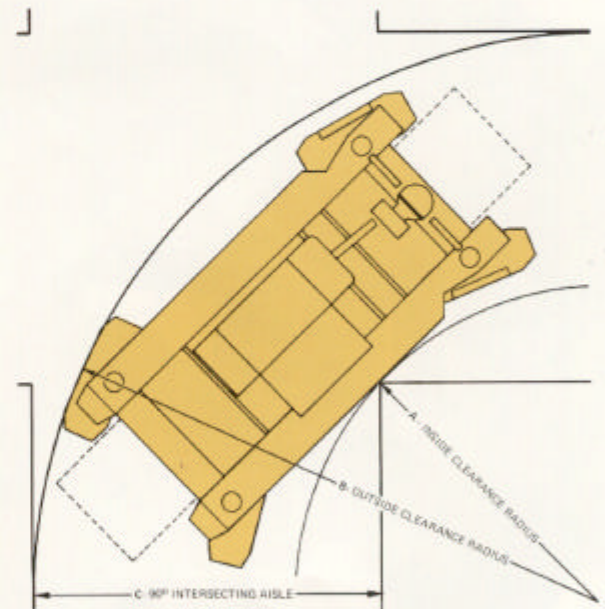
GRADEABILITY* % Grade with full load @ mph (km/h)

Gear	% Grade with full load @ mph (km/h)		
	%	mph	km/h
1st	17	1.0	1.8
2nd	10	1.0	1.8
3rd	6.5	1.0	1.8
4th	4	1.0	1.8

*NOTE: Performance specifications are affected by the condition of the vehicle and how it is equipped, as well as the nature and condition of the operating area. If these specifications are critical, the proposed application should be discussed with your dealer.




** Horn can be relocated if overhead clearance is critical.





HYSTER COMPANY
Industrial Truck Division

Box 334, Danville, Illinois 61832

Hyster and  are registered trademarks of Hyster Company. Hyster products are subject to change without notice.

Form 3447

5/61 Litho in U.S.A.—5WW

